

Marshall Multispread Type D Spinner Configuration

Release Date : February 2nd 2012

The Type D Spinner configuration fitted to the Marshall Multispread range of all purpose fertiliser spreaders has been developed to accurately spread granular fertilisers such as Urea, DAP, Superphosphate and other mineral fertilisers along with non granulated material such as lime and gypsum. Spreading widths of up to 36m for granulated materials like Urea and up to 16m for non- granulated fertilisers like Lime and Gypsum can be achieved.

The Type D configuration consists of 600mm diameter spinners fitted with four spinner vanes. There are two long vanes and two short vanes fitted to the spinner discs. The long vanes have an effective diameter of 700mm and are normally in the radial position on the disc. The short vanes have an effective diameter of 600mm, their angular position is adjusted to alter the spreading width of different materials.

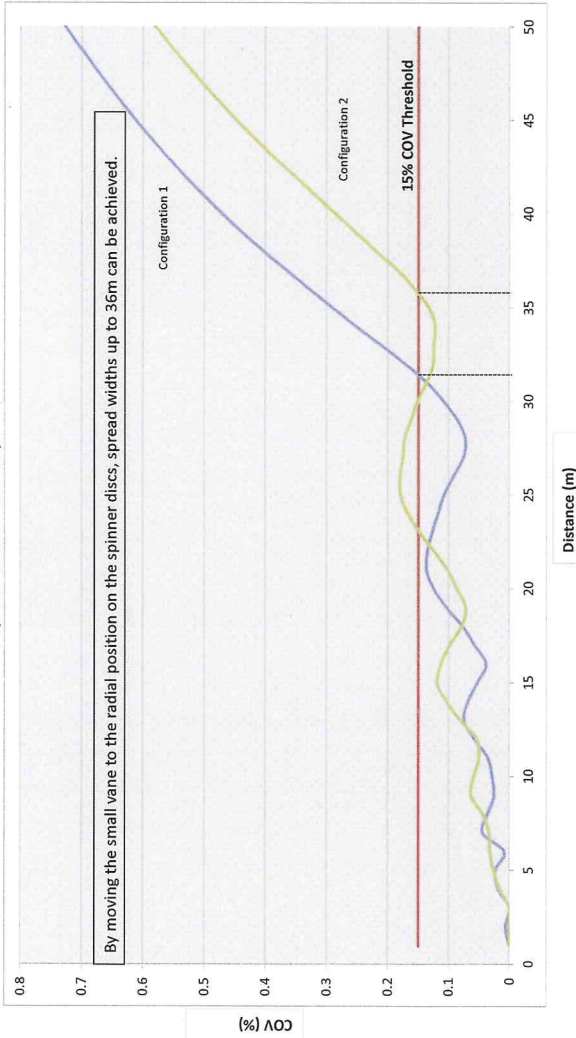
A two part fertiliser chute consisting of a top deflector assembly and lower baffle plate is used to guide fertilisers into the spinner.

Spinner Drive options include PTO, Hydraulic or 25hp Petrol Engine



**Marshall Multispread - Type D Spinner Configuration
Urea Spreading Performance**

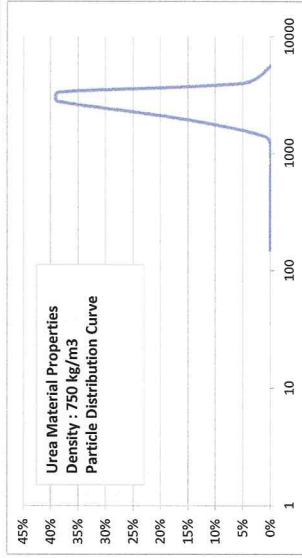
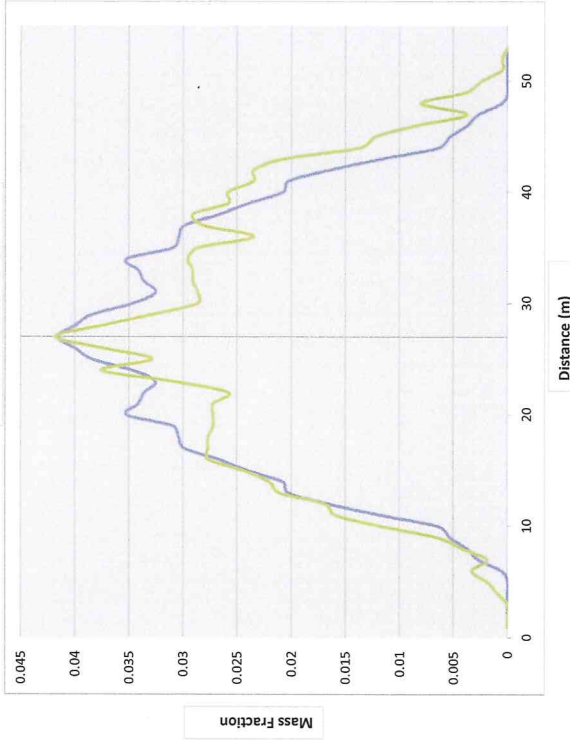
Spread Pattern - COV Graph



Configuration 1 – Spread Width : 32m
 Date : January 16 2012
 Model No : 910T Ground Speed : 18 km/h
 Spinner Diameter : 600mm Spinner Speed : 900 RPM
 Vane Configuration
 2 x Long Vanes in radial position
 2 x short vanes at -5 degree offset
 Chute position : 35mm

Configuration 2 – Spread Width : 36m
 Date : January 16 2012
 Model No : 910T Ground Speed : 18 km/h
 Spinner Diameter : 600mm Spinner Speed : 900 RPM
 Vane Configuration
 2 x Long Vanes in radial position
 2 x short vanes at 0 degree offset
 Chute position : 35mm

Mass Distribution Graph

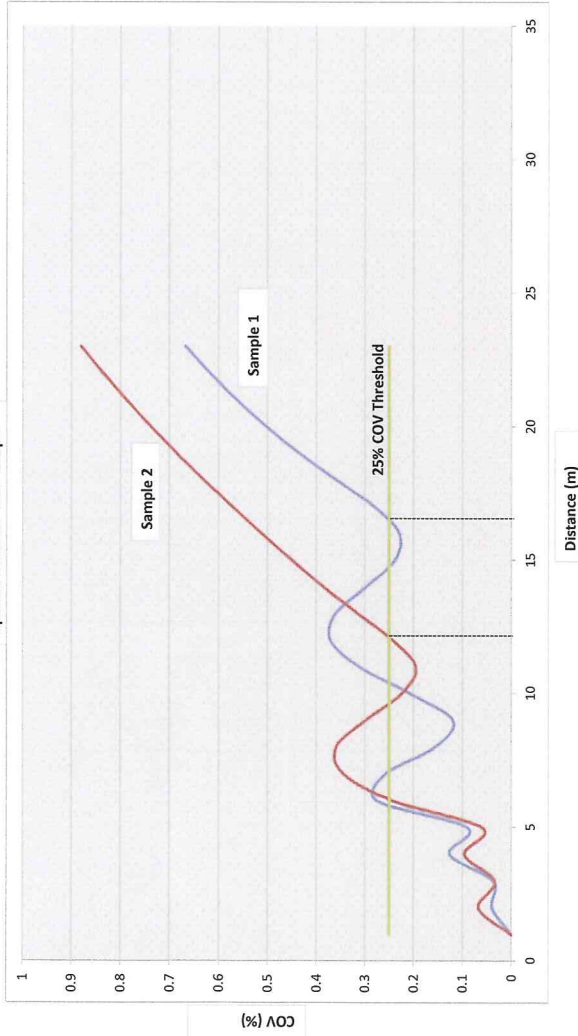


MARSHALL MULTISPREAD
 www.marshallmultispread.com.au
 Freecall : 1800 651 288

The test above was carried out according to the AFSA Fertiliser Code under controlled conditions. Roesner P/L recommends that fertiliser consistency, wind speed and direction and forward speed are considered prior to commencing spreading.

**Marshall Multispread - Type D Spinner Configuration
Lime Spreading Performance**

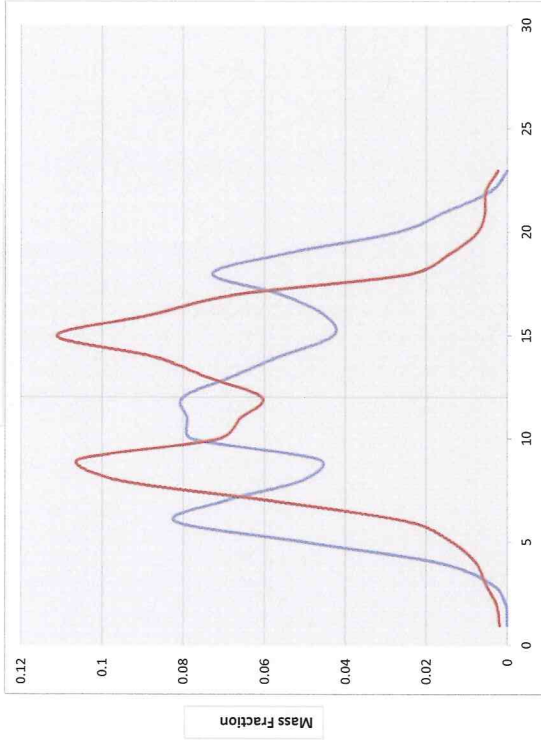
Spread Pattern - COV Graph



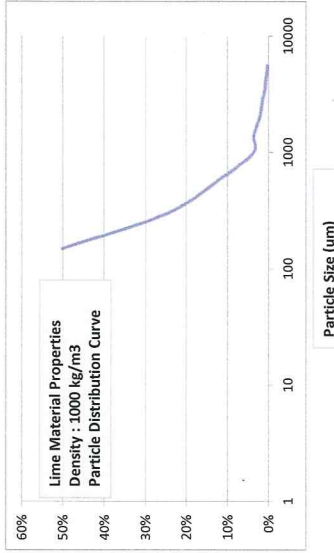
Machine Configuration
 Date : December 2011 - January 2012
 Model No : 910T Ground Speed : 18 km/h
 Spinner Diameter : 600mm Spinner Speed : 900 RPM
Vane Configuration
 2 x Long Vanes in radial position
 2 x short vanes at -5 degree offset
 Chute position : 35mm

Spread Width : 12-16
 The type of lime product, its moisture content and particle size distribution has a large effect on the spread width that can be achieved.
 For finer materials widths between 6-10m are typical
 Sample 1 : Lake Preston Lime Moisture Content : ~3% by wt
 Sample 2 : Lake Preston Lime Moisture Content : <1% by wt

Mass Distribution Graph



Distance (m)



Lime Material Properties
 Density : 1000 kg/m³
Particle Distribution Curve

Particle Size (um)

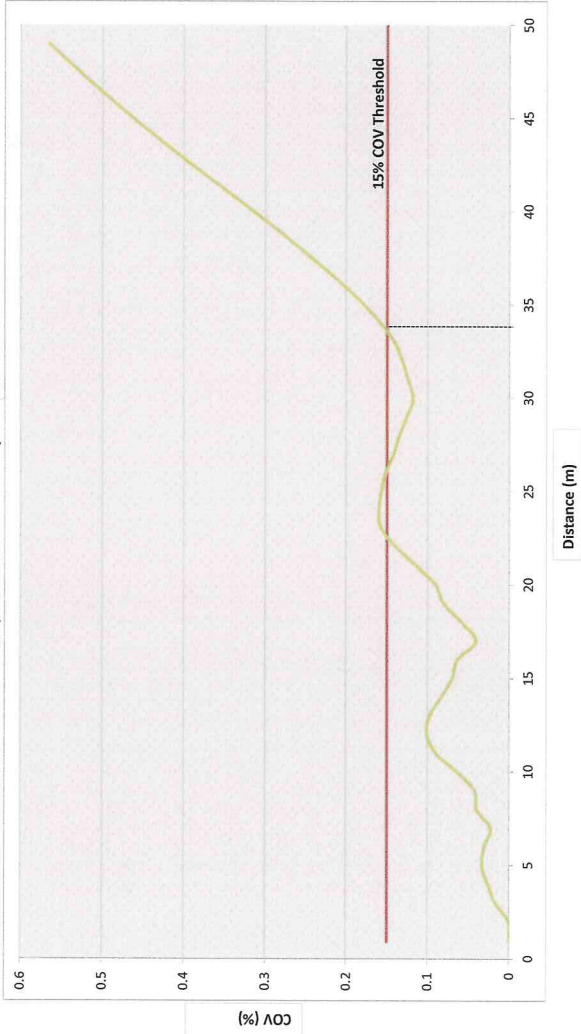


www.marshallmultispread.com.au
 Freecall : 1800 651 288

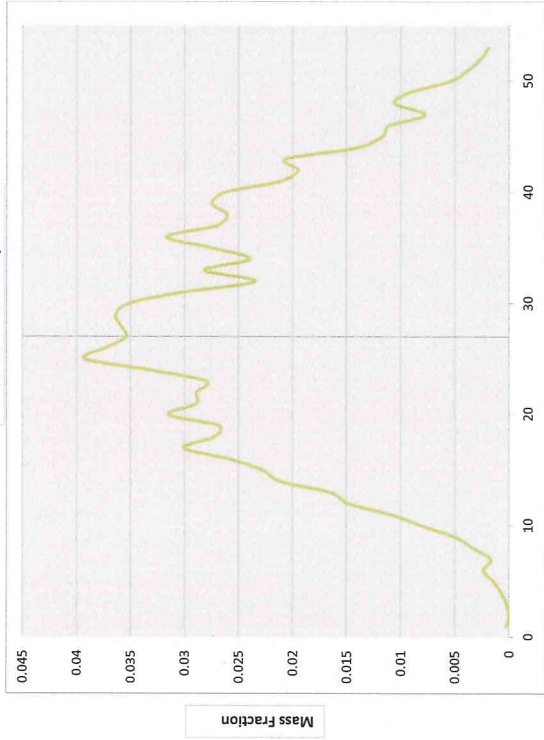
The test above was carried out according to the AFSA Fertiliser Code under controlled conditions. Roessler P/L recommends that fertiliser consistency, wind speed and direction and forward speed are considered prior to commencing spreading.

**Marshall Multispread - Type D Spinner Configuration
DAP Spreading Performance**

Spread Pattern - COV Graph



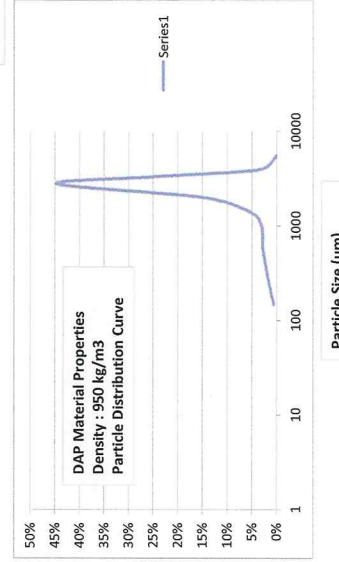
Mass Distribution Graph



Configuration 1 - Spread Width : 34m
 Date : January 16 2012
 Model No : 910T Ground Speed : 18 km/h
 Spinner Diameter : 600mm Spinner Speed : 900 RPM
 Vane Configuration
 2 x Long Vanes in radial position
 2 x short vanes at -5 degree offset
 Chute position : 35mm

Distance (m)

Distance (m)



Particle Size (um)



www.marshallmultispread.com.au
 Freecall : 1800 651 288

The test above was carried out according to the AFSA Fertiliser Code under controlled conditions. Roesner P/L recommends that fertiliser consistency, wind speed and direction and forward speed are considered prior to commencing spreading.